

# Cherokee N3619R

THIS IS NOT AN OFFICIAL DOCUMENT. DO NOT RELY ON THIS INFORMATION FOR AIRCRAFT OPERATIONS. ALWAYS USE THE OFFICIAL PILOT OPERATING HANDBOOK OR AIRCRAFT MANUAL.

## PREFLIGHT INSPECTION

### CABIN

Certificates/Documents.....IN AIRCRAFT  
Parking Brake.....SET  
Control Wheel Lock.....REMOVE  
Ignition Switch.....OFF  
Radio Master.....OFF  
Master Switch.....ON  
Fuel Quantity Indicators.....CHECK QUANTITY  
Fuel Pump ON.....CHECK PRESSURE  
Flaps.....DOWN FOR INSPECTION  
\*\*\* For Night Operations: Lights.....CHECK  
Master Switch.....OFF  
Fuel Selector Valve.....PROPER TANK  
Baggage Door.....CHECK LOCKED

### RIGHT WING

Aileron.....CHECK FREEDOM & SECURE  
Wing Tie Down.....DISCONNECT  
Main Wheel Tire.....CHECK(Inflation/Condition)  
Fuel Tank Sump Quick Drain Valve.....DRAIN  
Fuel Quantity.....CHECK VISUALLY  
Fuel Filler Cap.....SECURE

### NOSE

Engine Oil Dipstick.....(6-8 Qts) CHECK/SECURE  
Propeller & Spinner.....CHECK  
Alternator Belt.....CHECK  
Landing Light(s).....CHECK  
Carburetor Air intake.....CHECK  
Nose Wheel Strut & Tire.....CHECK  
Wheel Chocks.....REMOVE  
Windshield.....CHECK CLEAN

### LEFT WING

Main Wheel Tire.....CHECK(Inflation/Condition)  
Fuel Tank Sump Quick Drain Valve.....DRAIN  
Fuel Quantity.....CHECK VISUALLY  
Fuel Filler Cap.....SECURE  
Pitot Tube/Cover.....CHECK/REMOVE  
Static Vent.....CHECK  
Fuel Tank Vent Opening.....CHECK  
Stall Warning.....CHECK  
Wing Tie Down.....REMOVE  
Aileron.....CHECK FREEDOM & SECURE

### TAIL SECTION

Tail Tie-Down.....DISCONNECT  
Control Surfaces.....CHECK FREEDOM & SECURE

## BEFORE STARTING ENGINE

Preflight Inspection.....COMPLETE  
Passenger Briefing.....COMPLETE  
Seats, Belts, Shoulder Harness...ADJUST & LOCK  
Fuel Selector Valve.....PROPER TANK  
Brakes.....SET  
Circuit Breakers.....CHECK IN  
Auto Pilot.....OFF

## STARTING ENGINE

Avionics/Radio Master ...SWITCHES OFF (DOWN)  
Mixture.....RICH  
Carburetor Heat.....COLD (IN)  
Prime.....AS REQUIRED (2-6)  
Throttle.....OPEN 1/8"  
Master Switch.....ON

Electric Fuel Pump.....ON/Check Pressure  
Propeller Area.....CLEAR  
Ignition Switch.....START  
Oil Pressure.....CHECK  
Electric Fuel Pump.....OFF/Check Pressure  
Throttle.....WARM UP @ 1000RPM  
Mixture.....Lean  
Avionics/Radio Master.....ON

## BEFORE TAXI

Lights & Flashing Beacon.....AS REQUIRED  
Audio Panel.....SET  
DG.....SET  
Flaps.....UP  
Brakes.....TEST

## BEFORE TAKEOFF

Parking Brake.....SET  
Seats, Belts, Harnesses.....CHECK SECURE  
Doors and Windows.....CLOSE & LOCK  
Flight Controls.....FREE & CORRECT  
Fuel Selector Valve.....PROPER TANK  
Mixture.....RICH  
Throttle.....2000 RPM  
Magnetos...CHECK (125 max +- 50 difference)  
Carburetor Heat.....CHECK for RPM Drop  
Engine Instruments & Ammeter.....CHECK  
Suction Gage.....CHECK  
Throttle.....IDLE  
Throttle Friction Lock.....ADJUST  
Elevator Trim.....SET for T/O  
Nose Trim.....SET for T/O  
Flight Instruments.....CHECK & SET  
Radios.....SET  
Transponder.....ALTITUDE  
Wing Flaps.....SET for takeoff  
Lights.....AS DESIRED  
Brakes.....RELEASE

## TAKEOFF

### NORMAL

### Auto Pilot Off

Wing Flaps.....UP  
Carburetor Heat.....COLD (IN)  
Elevator Trim.....SET  
Electric Fuel Pump.....ON  
Mixture.....MAX RPM (RICH)  
Throttle.....FULL OPEN  
Elevator Control.....LIFT NOSE WHEEL (60 MPH)  
Climb Speed.....85-100 MPH

### SHORT FIELD TAKEOFF

Wing Flaps.....0 degrees  
Soft field.....25 degrees 2<sup>nd</sup> notch  
Carburetor Heat.....COLD (IN)  
Elevator Trim.....SET  
Brakes.....APPLY  
Mixture.....MAX RPM (RICH)  
Fuel Pump.....ON  
Throttle.....FULL OPEN  
Brakes.....RELEASE  
Elevator Control.....SLIGHTLY TAIL LOW  
Climb Speed.....74 MPH

## ENROUTE CLIMB

Airspeed.....100 MPH  
Throttle.....FULL OPEN

Mixture.....RICH  
 Electric Fuel Pump..... ON

**CRUISE**

Power.....2200 – 2500 RPM  
 Elevator Trim .....ADJUST  
 Mixture.....LEAN

**DESCENT**

Fuel Selector Valve..... PROPER TANK  
 Power.....AS DESIRED  
 Mixture.....ADJUST

**BEFORE LANDING**

Seats, Belts, Harnesses.....SECURE  
 Fuel Selector Valve..... PROPER TANK  
 Mixture.....RICH

**LANDING**

**NORMAL LANDING**

Airspeed.....85 MPH (flaps up)  
 Wing Flaps.....AS DESIRED (below 85 KIAS)  
 Airspeed.....76 MPH (flaps down)  
 Touchdown.....MAINS FIRST  
 Landing Roll.....lower nose wheel gently  
 Braking.....MINIMUM REQUIRED

**SHORT FIELD LANDING**

Airspeed.....80-85 MPH (flaps up)  
 Wing Flaps.....FULL DOWN  
 Airspeed.....70-75 MPH (until flare)  
 Throttle.....REDUCE to Idle after clearing obstacle  
 Touchdown.....MAINS FIRST  
 Landing Roll.....Lower Nose Wheel Gently  
 Braking.....AS REQUIRED  
 Wing Flaps.....RETRACT

**GO-AROUND**

Throttle.....FULL OPEN  
 Carburetor Heat.....COLD (IN)  
 Wing Flaps.....RETRACT SLOWLY  
 Climb Speed.....70 MPH

**AFTER LANDING**

Carburetor Heat.....COLD (IN)  
 Wing Flaps.....UP  
 Transponder.....STANDBY  
 Lights.....As Required

**SHUTDOWN**

Brakes.....SET  
 Avionics Master.....OFF  
 Electrical Equipment & Lights.....OFF  
 Mixture.....IDLE CUTOFF  
 Ignition Switch.....OFF  
 Master.....OFF  
 Control Lock.....INSTALL  
 Hobbs.....RECORD  
 Aircraft.....SECURE  
 Flight Plan.....CLOSE

**ENGINE FAILURE DURING TAKEOFF RUN**

Throttle.....IDLE  
 Brakes.....APPLY  
 Wing Flaps.....RETRACT  
 Mixture.....IDLE CUT-OFF  
 Ignition Switch.....OFF  
 Master Switch.....OFF

**ENGINE FAILURE IMMEDIATELY AFTER TAKEOFF**

Airspeed..80 MPH (flaps up) 70 MPH (flaps down)  
 Mixture..... IDLE CUT-OFF  
 Fuel Selector Valve.....OFF  
 Ignition Switch.....OFF  
 Wing Flaps ..... As Required  
 Master Switch.....OFF

**ENGINE FAILURE DURING FLIGHT**

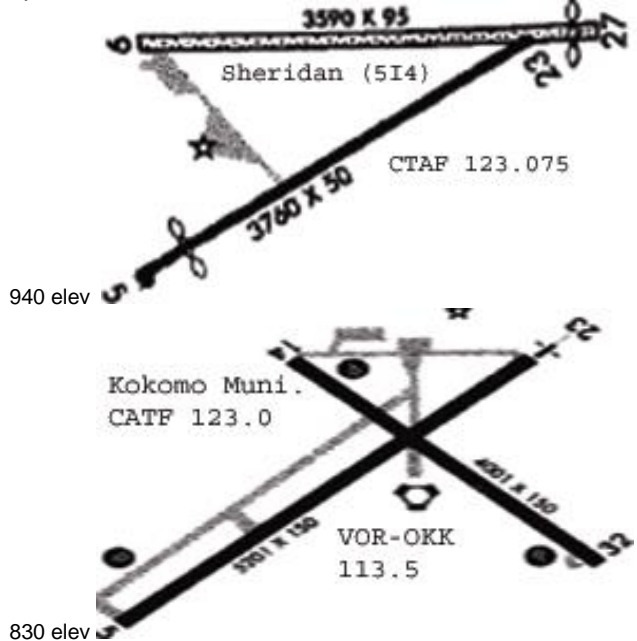
Airspeed.....80 MPH  
 Carb Heat.....ON  
 Fuel Selector Valve..... PROPER TANK  
 Electric Fuel Pump .....ON  
 Mixture.....RICH  
 Ignition Switch.....BOTH (or Start if prop stopped)  
 Primer.....IN & LOCKED  
 Transponder.....7700  
 Radio.....121.5 MAYDAY!

**EMERGENCY LANDING W/O POWER**

Airspeed..80 MPH (flaps up) 70 MPH (flaps down)  
 Mixture.....CUT-OFF  
 Fuel Selector Valve.....OFF  
 Fuel Pump .....ON  
 Ignition Switch.....OFF  
 Wing Flaps ..... As required (40 recommended)  
 Master Switch.....OFF  
 Doors .....UNLATCH PRIOR TO TOUCHDOWN  
 Touchdown.....Slightly Tail Low (min. speed)  
 Brakes.....APPLY HEAVILY

Max Weight 2400 lbs Useful Load 973 lbs  
 Useful Load after Full Fuel 673 lbs Max Baggage 200 lbs  
 Oil Capacity 8 qts Fuel Capacity 50 gal Usable Fuel 48  
 Fuel Burn 10/hour

Vso	57 MPH	Vfe	115 MPH	Downwind	90
Vs1	67 MPH	Va	129 MPH	Base	85
Vx	74 MPH	Vno	140 MPH	Final	80
Glide	80 MPH	Vne	171 MPH	Short	70
Vy	85 MPH	X-wind		TAS	125



**GLENNDALE AIRPORT:** 122.90 CTAF, 850 Elevation, Pwr Lines 18  
 18 right traffic, 36 left traffic